

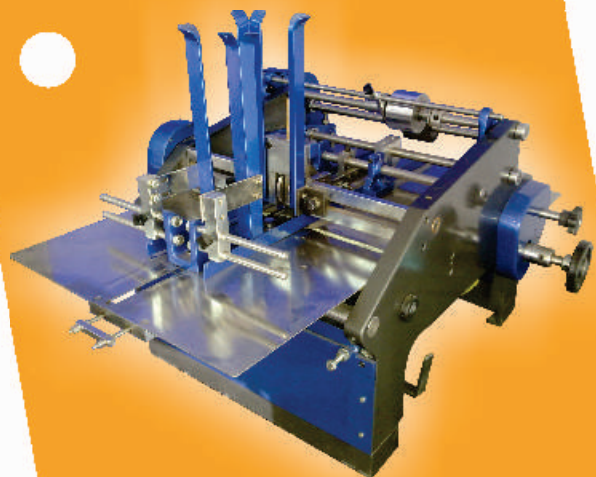
AUTOMATIC LABEL BATCH PRINTING MACHINE

Suitable to Neat, Sharp & registered Print Batch No., Price, Mfg.Dt.,Exp.Dt.etc. With the help of Rubber/Polymer flat Stereos. Machine with Automatic Feeding System, Stack of labels is pulled or pushed by roller & collected from the tray after printing the message.

- **OVER ALL DIMENSION** : 820mm X 415mm X 490mm
- **SPEED**: 125/180/250 imprints / min.
- **PRINTING MEDIA**: Fast Dry permanent **Paste ink**
- **LABEL SIZE**: 20mm X 40mm to 150mm X 200mm
- **MOTOR**: ¼HP/0.18KV1440RPM(50Hz)
- **POWER**: 230 Volts, Single Phase Or 400/440 Volts,3 Phase
- **WEIGHT** : Approx 75 Kgs.
- **APPLICATIONS** : Labels & PVC Shrink Sleeves.



AUTOMATIC CARTON CODER



AUTOMATIC CARTON BATCH PRINTING MACHINE

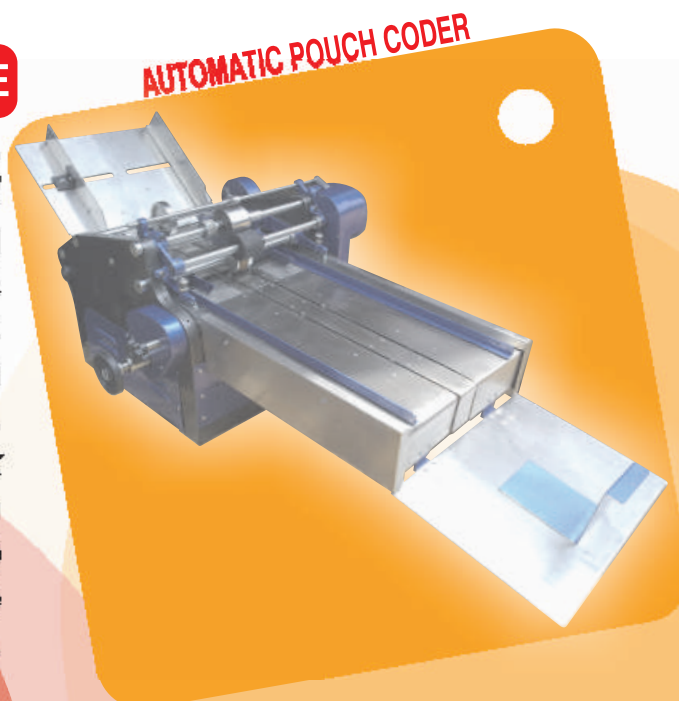
Suitable to Neat, Sharp & registered Print Batch No., Price, Mfg.Dt.,Exp.Dt.etc. With the help of Rubber/Polymer flat Stereos. Machine with Automatic Feeding System, Stack of Cartons is pulled or pushed by roller & collected from the tray after printing the message.

- **OVER ALL DIMENSION** : 870mm X 765mm X 625mm
- **SPEED**: 125/180/250 imprints / min.
- **PRINTING MEDIA**: Fast Dry permanent **Paste ink**
- **CARTON SIZE**: 75mm X 35mm to 300mm X 175mm
- **MOTOR**: ¼HP/0.18KV1440RPM(50Hz)
- **POWER**: 230 Volts, Single Phase Or 400/440 Volts,3 Phase
- **WEIGHT** : Approx 125 Kgs.
- **APPLICATIONS** : Cartons.

AUTOMATIC POUCH BATCH PRINTING MACHINE

Suitable to Neat, Sharp & registered Print Batch No., Price, Mfg.Dt.,Exp.Dt.etc. With the help of Rubber/Polymer flat Stereos. Machine with Automatic Feeding System, Stack of Pouches is pulled or pushed by roller & collected from the tray after printing the message.

- **OVER ALL DIMENSION** : 850mm X 765mm X 575mm
- **SPEED**: 125/180/250 imprints / min.
- **PRINTING MEDIA**: Quick Dry permanent **Liquid ink**
- **POUCH SIZE**: 75mm X 35mm to 300mm X 200mm
- **MOTOR**: ¼HP/0.18KV1440RPM(50Hz)
- **POWER**: 230 Volts, Single Phase Or 400/440 Volts,3 Phase
- **WEIGHT** : Approx 120 Kgs.
- **APPLICATIONS** : Laminated Pouches (Polyester Pouch).

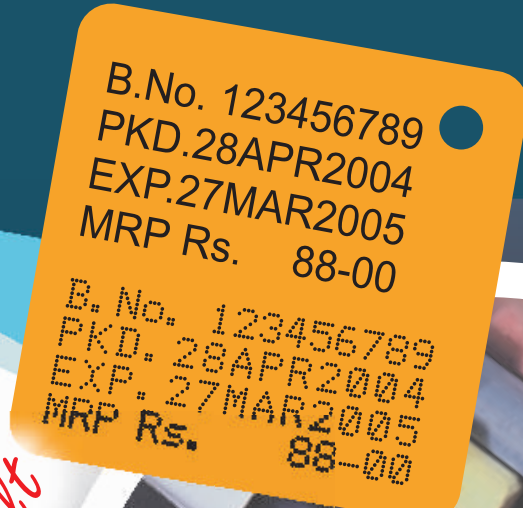


Website: www.batchcodingmachinery.com

RISHI PACKAGING

BATCH PRINTING / CODING MACHINE

Rishi
PACKAGING



A Place to Grow

Since last 23 years we have been manufacturing different types of packaging machinery. Numbers of customers have shown their appreciation after using our machines. After our long experience in the line step by step we start new products manufacturing by using our latest technology & up gradation (R&D) for the best interest of the customers.

Manufacturer & Exporter Of Batch Coding/Printing Machinery: We make high precision marking and coding model for registration printing information for manufacturers packaged goods to code information's like B.No., Dt. Of Mfg., Expiry Date, Prices & Other statutory information on L. D., P.P., H.M., Laminated Pouches(Polyester Pouch), Alu. Foil, Bag, Tin, Boxes, Labels, Bottles, corrugated carton, Hessian(Gunny)/Paper Bags, HDPE Woven/Non-Woven Sacks, Wooden Case/ Wooden Crate, Plywood, Metallic/ Plastic Drums/ Barrels/ Sheets/ Rubber etc.

RISHI PACKAGING

Block No.10 Mahesh-Naresh Society,
Behind Pavitranagar,
Near Gurnanak Hospital, Ghodasar,
Ahmedabad 380050. (Gujarat) INDIA.
Phone: +91-9328259850,
+91-79-65259850

E-Mail: info@batchcodingmachinery.com

Superior Result
Superior Equipment Performance



**Electro- Mechanical Motorized Contact Coding Machine:
(S.S. Fabricated body) Model No. : RISHI/SS/EMCC/35X35**



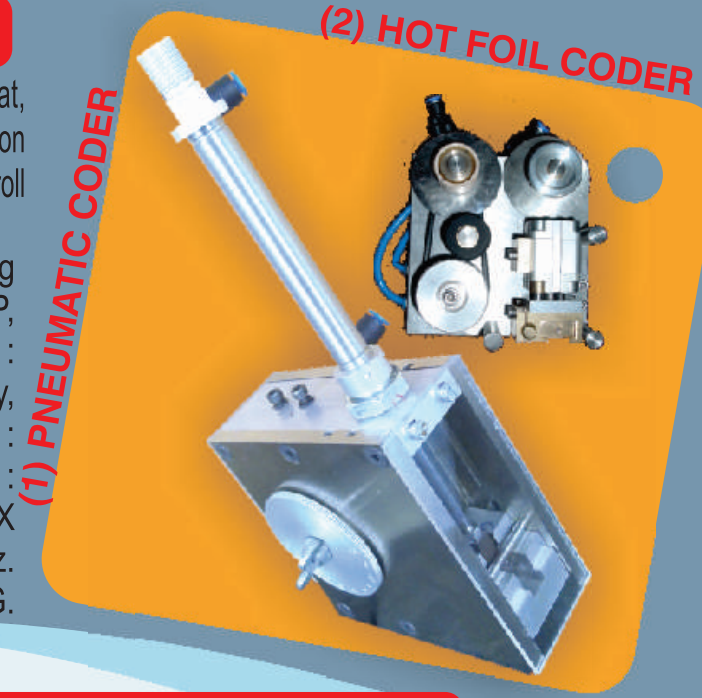
RISHI/SS/EMCC/35X35

• **SPECIFICATION** : Print Area 35X35mm,35X51mm,51X51 mm,51X101mm • **PRINTING SPEED** : Easily adjust the speed on regulator Min.5 Max.100 imprints/min.(Depending on skill of operator) • **PRINTS LETTERS**: Easily Changeable grooved/flat rubber/nylon stereos. • **INKING MEDIUM** : Refillable Ink Cartridge. • **PRINTING MEDIA** : Quick Drying Ink(Black,Red,Violet,Green) • **INK CONSUMMATION** : Approx 15000 impression/20 M.L. Depend upon printing matter. • **POWER** : 230V AC±10%(50 Hz) Single Phase. • **WEIGHT** :13.300 Kgs. • **USED** : It is a very easy to use Semi-automatic registered Printing on Pouches, Rigid Containers, Tins, Bottles(curvature) Laminated & Plain Carton & all types of Labels etc.

(1) Pneumatic Coder / (2) Hot Foil Coder

(1). It is use of automatic on-line contact coding machine for neat, sharp & registered print B.No.,MRP, Exp.Dt.,With the help of Rubber/ Nylon Stereos. It can be installed on Form-Fill-Seal (FFS) machines of any stop & go roll moving system.

(2). This Machine is fully automatic on-line contact coding machine for net, sharp & registered print B.No.,MRP, Exp.Dt.,With the help of S.S. Letters Kit Box. • Application : Pharmaceutical and Chemical industry, Food & Dairy Industry, Cosmetic Industry, Liquor & Beverages. • Dimensions : 750mm (L) X 850mm (W) X 1200mm (H) • Print Area : 25mm X 25mm • Output speed 400 Working height 200(L) X 200(H) X 80 (W) • Power supply Single phase, 230V, 50Hz. Air Supply 2 kg/cm2 Air Consumption 10 CFM Net weight 4 KG.



(1) PNEUMATIC CODER

(2) HOT FOIL CODER

**Electro- Mechanical Motorized Contact Coding Machine:
(M.S. Fabricated body) Model No. : RISHI/MS/EMCC/35X35**



RISHI/MS/EMCC/35X35

• **SPECIFICATION** : Print Area 35X35mm,35X51mm,51X51 mm,51X101mm • **PRINTING SPEED** : Easily adjust the speed on regulator Min.5 Max.100 imprints/min.(Depending on skill of operator) • **PRINTS LETTERS**: Easily Changeable grooved/flat rubber/nylon stereos. • **INKING MEDIUM** : Refillable Ink Cartridge. • **PRINTING MEDIA** : Quick Drying Ink(Black,Red,Violet,Green) • **INK CONSUMMATION** : Approx 15000 impression/20 M.L. Depend upon printing matter. • **POWER** : 230V AC±10%(50 Hz) Single Phase. • **WEIGHT** :13.300 Kgs. • **USED** : It is a very easy to use Semi-automatic registered Printing on Pouches, Rigid Containers, Tins, Bottles(curvature) Laminated & Plain Carton & all types of Labels etc.



HAND STAMPING SYSTEM

HAND STAMPING SYSTEM

Hand Stamping System can be used for Printing / Marking Batch No., Mfg.Dt., Exp.Dt., M.R.P.Rs., etc. on pouch, Tin, Labels, Cartons, Foils etc. It is a very easy to use, light weight, self inking, durable & reliable hand-held manul coder. • **Available Print area** :(1) 25mm X 12mm (2) 35mm X 25mm (3) 55mm X 25mm (4) 55mm X 30mm • Code is self inking by especially formulated & processed felt pad. • Work on laminated, absorbent & non absorbent surface. • Provide interchangeable one (Letters) Grooved, Flat Rubber, Metal, Nylon Stereos Kit Box any one with each coder. Available in Dot Matrix type.

**Electro- Mechanical Motorized Contact Coding Machine:
Model No. : RISHI/ECO/EMCC/35X25**



RISHI/ECO/EMCC/35X25

• **SPECIFICATION** : Print Area 35X25mm, • **PRINTING SPEED** : Easily adjust the speed on regulator Min.5 Max.100 imprints/min. (Depending on skill of operator) • **PRINTS LETTERS**: Easily Changeable grooved/flat rubber/nylon stereos. • **INKING MEDIUM** : Refillable Ink Cartridge. • **PRINTING MEDIA** : Quick Drying Ink(Black,Red,Violet,Green) • **INK CONSUMMATION** : Approx 15000 impression/20 M.L. Depend upon printing matter. • **POWER** : 230V AC±10%(50 Hz) Single Phase. • **WEIGHT** :8.500 Kgs. • **USED** : It is a very easy to use Semi-automatic registered Printing on Pouches, Rigid Containers, Tins, Bottles(curvature) Laminated & Plain Carton & all types of Labels etc.

HANDY MARKER / CODER

Very compact, light weight friendly and compose almost any type of information that you wish to mark. • **To mark** variable information like Batch No. Date Of Manufacturing, Exp. Date, Name & Address Of Consignor / Consignee, Product Name / Code, Shipping Marks, Nett Weight / Gross Weight Etc., On porous (absorbent) and non-porous (non-absorbent) surfaces. • **APPLICATIONS** : Corrugated Carton, Hessian (Gunny)/ Paper Bags, HDPE Woven/ Non-Woven Sacks, Wooden Case / Wooden Crate, Plywood, Metallic / Plastic Drums / Barrels / Sheets / Rubber etc. • **PRINT AREA**: (1) 40mm (Width) X 325mm (Length) (2) 85mm (Width) X 325mm (Length)(3) 96mm (Width) X 325mm (Length)



HANDY MARKER / CODER